

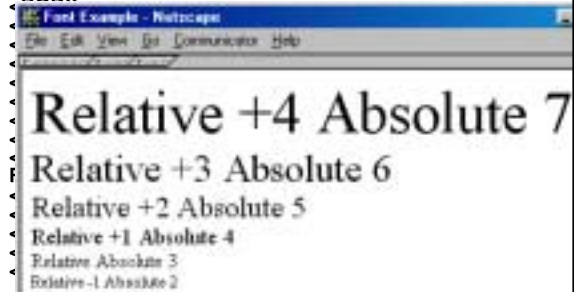
HTML: Font Tag - Size

- Font tag describes text appearance
- Requires a closing tag
- Size attribute specified as relative or absolute Size
 - Relative size: +4 +3 +2 +1 -1 -2
 - Absolute size: 7 6 5 4 3 2 1
- Syntax
 Change Size

Copyright © 2002 R.M. Laurie 1

HTML: Font Size Example

```
<HTML>
<HEAD>
<TITLE>Font Example</TITLE>
</HEAD>
```



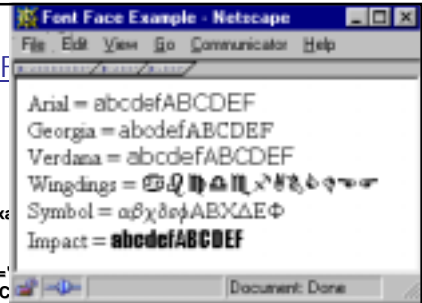
HTML: Font Tag - Face

- Times New Roman is the default font face
- HTML does not support the downloading of fonts to client browser
- Limit font face to very common fonts: Arial, Times New Roman, Verdana, Symbol, Impact, etc.
- Syntax
 Text

Copyright © 2002 R.M. Laurie 3

HTML: Font Face Example

```
<HTML>
<HEAD>
<TITLE>Font Face Example</TITLE>
</HEAD>
<BODY>
Arial = <FONT FACE="Arial"> abcdefABCDEF
Georgia = <FONT FACE="Georgia"> abcdefABCDEF
Verdana = <FONT FACE="Verdana"> abcdefABCDEF</FONT><BR>
Wingdings = <FONT FACE="Wingdings"> abcdefABCDEF</FONT><BR>
Symbol = <FONT FACE="Symbol"> abcdefABCDEF</FONT><BR>
Impact = <FONT FACE="Impact"> abcdefABCDEF</FONT><BR>
</BODY>
</HTML>
```



HTML: Font Face Order

- It is possible to define an order of preference for font face tags to improve probability of matching what is available on client computer. Best to use one of the following combinations.
 - Text
 - Text
 - Text
 - Text
 - Text

Copyright © 2002 R.M. Laurie 5

HTML: Nesting Closing Tags

- It is very important that all closing tags be set up in a nested fashion
- Font tags can have both size and face attributes in the same tag
- When a closing font tag is encountered it reverts to previous defined font

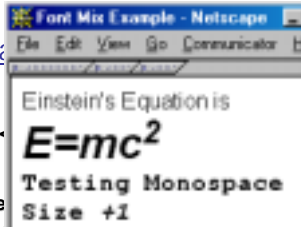
Copyright © 2002 R.M. Laurie 6

HTML: Tag Nesting Ex:

```

<HTML>
<HEAD>
<TITLE>Font Mix Example</TITLE>
</HEAD>
<BODY>
<FONT FACE="Arial, Helvetica" >
Einstein's Equation is <B>
<FONT SIZE="+3">
E=mc<SUP>2</SUP></FONT></I></B><BR>
</FONT> <FONT FACE="Courier New, Courier, mono"
SIZE="+1">
<B>Testing Monospace <BR>
Size <I>+1</I></B></FONT>
</BODY>
</HTML>

```



Specifying Colors

- Default colors for text and background are defined in BODY tag as attributes.
- Color can be specified for a string of text using the Font Tag color attribute
- Colors are generally specified using a 24-bit Color Specification
- Color names are permitted to specify 16 specific colors (Avoid)

Copyright © 2002 R.M. Laurie 8

RGB Color Specification

- The colors Red, Green, and Blue are combined to produce specific colors
- Denoted as a 24-bit code
- Usually specified as 6 digit hexadecimal
- Sometimes specified as three decimal values 0 to 255 separated by commas
- 16 million colors are available

Copyright © 2002 R.M. Laurie 9

Common RGB Color Values

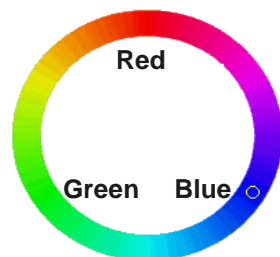
Common color values used for the web are:

White	= #FFFFFF	= 255,255,255	
Black	= #000000	= 0,0,0	
Red	= #FF0000	= 255,0,0	
Blue	= #0000FF	= 0,0,255	
Green	= #00FF00	= 0,255,0	Red + Blue =
Aqua	= #00FFFF	= 0,255,255	Violet
Yellow	= #FFFF00	= 255,255,0	
Violet	= #FF00FF	= 255,0,255	

Copyright © 2002 R.M. Laurie 10

More RGB Color Values

Maroon	= #800000
Navy	= #000080
Gray	= #808080
Teal	= #008080
Silver	= #C0C0C0
Olive	= #808000
Dk. Ylw.	= #CCCC33
Orange	= #FF9900



Copyright © 2002 R.M. Laurie 11

The 8-Bit Color Cube

- Many people surf with their display set to 8-bit (256) color
- Select colors using the:
 - Rule of 51 Decimal* or
 - Rule of 33 Hexadecimal*

Copyright © 2002 R.M. Laurie 12

The 8-Bit Color Cube

- Select values for each byte that are multiples of above numbers:
 - Decimal = 0, 51, 102, 153, 204, 255
 - Hexadecimal = 00 33 66 99 CC FF



Copyright © 2002 R.M. Laurie 13

HTML: Tags with Colors Attributes

- BODY tag attributes specify the background and text colors of a page
<BODY BGCOLOR="#000066" TEXT="#FFFFFF" > White Text, Navy Background </BODY>
- FONT tag with color attribute
 Pale red color text

Copyright © 2002 R.M. Laurie 14

Example: HTML Tags With Color Attributes

```
<HTML>
<HEAD><TITLE>Color Test</TITLE></HEAD>
<BODY BGCOLOR="#000066" TEXT="#FFFFFF">
<B>Default<BR>
<FONT COLOR="#FF9966">
Pale Red</FONT><BR>
<FONT SIZE="+2" COLOR="#00FF00">
Green +2</FONT><BR>
<FONT SIZE="-1" COLOR="#FF00FF">
Violet -1</FONT><BR>
<FONT SIZE="+2">
<FONT COLOR="#00FFFF">
Aqua +2</FONT><BR>
<FONT COLOR="#FFFF00">Yellow
+2</FONT></FONT><BR></B>
</BODY></HTML>
```

