

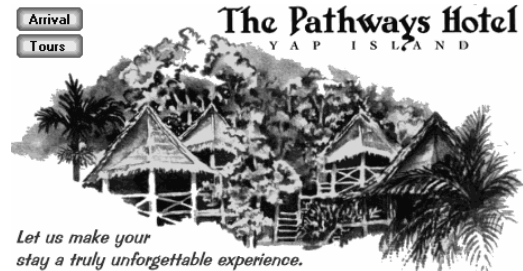
Image Maps

- Multiple "hot spots" (clickable areas) on an image
- Client Side Image Maps
 - Supported by most browsers (Version 3.0+)
 - Performed by browser
 - Uses HTML tags only
- Server Side Image Maps
 - Works on even oldest of web browsers
 - Requires a CGI script to function
 - Beyond scope of this course

1

Copyright © 2002 R.M. Laurie

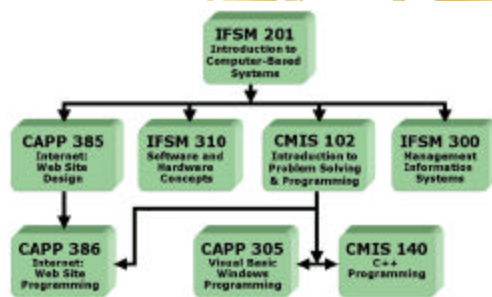
The Image



2

Copyright © 2002 R.M. Laurie

Another Possibility



3

Copyright © 2002 R.M. Laurie

Client Image Map Syntax - 1

- The image map must be named using the USEMAP attribute of the IMG tag.
``
- The MAP tag defines the name of the file for which you have a defined image map
`<MAP NAME="Pathways"> </MAP>`
- The AREA tag specifies the attributes of each hot spot area with coordinates.
`<AREA SHAPE="RECT" COORDS="3,26,65,49" HREF="PathwaysTours.htm" ALT="Yap Tours">`

4

Copyright © 2002 R.M. Laurie

Client Image Map Syntax - 2

- The AREA tag SHAPE attribute specifies the hot spot area coordinates.
- SHAPE="RECT|CIRCLE|POLY|DEFAULT"
 - A rectangle is defined using two points. The top left corner, and the bottom right corner of the rectangle.
`<AREA SHAPE=RECT COORDS="0,0,9,9">` would specify a rectangle of 10x10 pixels, starting in the top left corner of the image.
 - A circle is defined by its center and radius. The COORDS attribute specifies the coordinates of center, and then radius of the circle, in pixels.
`<AREA SHAPE=CIRCLE COORDS="10,10,5">`

5

Copyright © 2002 R.M. Laurie

Client Image Map Syntax - 3

- SHAPE="RECT|CIRCLE|POLY|DEFAULT"
 - A polygon is built up by a list of coordinates. They are all connected in the order you present, and the last coordinate pair is connected to the first. `<AREA SHAPE=POLY COORDS="10,50,15,20, 20,50">` would specify a triangle, with edge locations (10,50), (15,20) and (20,50).
 - The default location doesn't have any coordinates, and it should be used only once in the map. It is used to indicate what should happen if the user selects one of the coordinates which are not defined in any of the other elements.

6

Copyright © 2002 R.M. Laurie

Client Image Map Syntax - 4

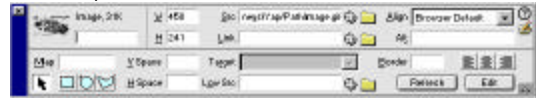
```
<IMG SRC="PathImage.gif" WIDTH="458"  
HEIGHT="241" USEMAP="#Pathways"  
BORDER="0">  
<MAP NAME="Pathways">  
  <AREA SHAPE="RECT" COORDS="3,26,65,49"  
  HREF="PathwaysTours.htm" ALT="Yap Tours">  
  <AREA SHAPE="RECT" COORDS="2,0,64,24"  
  HREF="PathwaysArrival.htm"  
  ALT="Getting to Yap and Arrival">  
  <AREA SHAPE="DEFAULT" NOHREF>  
</MAP>
```

7

Copyright © 2002 R.M. Laurie

Useful Software

- A graphics program that displays cursor coordinates.
- The shareware at <http://www.boutell.com/mapedit>
- Use Dreamweaver's Image Map function in Properties Window



8

Copyright © 2002 R.M. Laurie